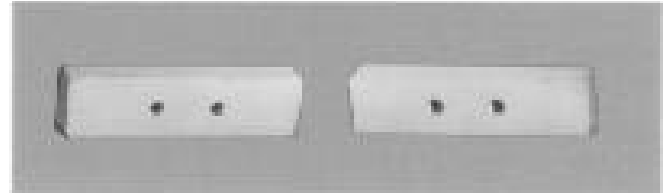


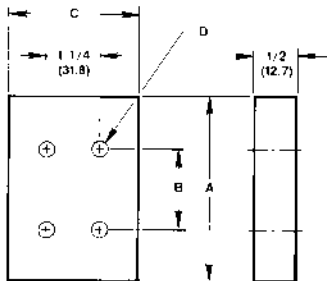
Steel Mounting Bars, Brackets & Plates to Simplify Installation of MD, MSP, & MX Divider Valves

MOUNTING BARS

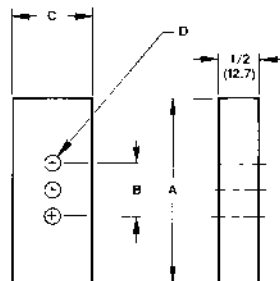
Cold finished, 1/2" (12.7 mm) thick bars are designed for welding to uneven metal surfaces. Tapped holes are provided for mounting the divider valves.



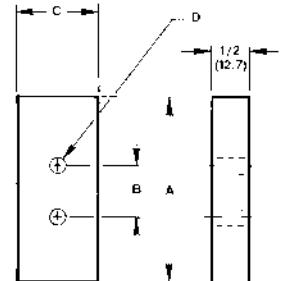
MD Divider Valve Mounting Bar, Part No. 543-602-000



MSP & MH Divider Valve Mounting Bar, Part No. 527-002-260



MJ, Part No. 543-604-000, and MX, Part No. 543-605-000 Divider Valve Mounting Bars



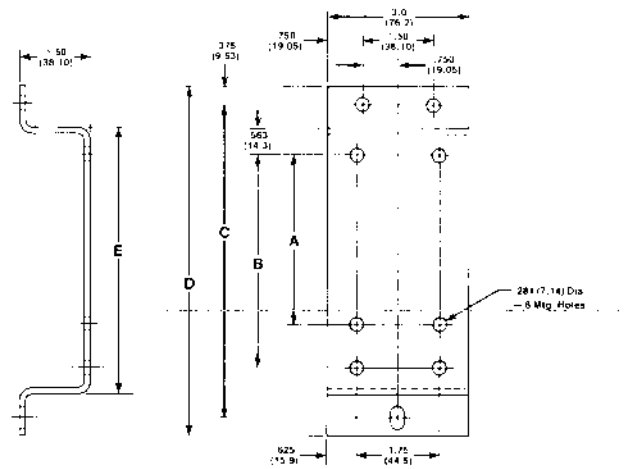
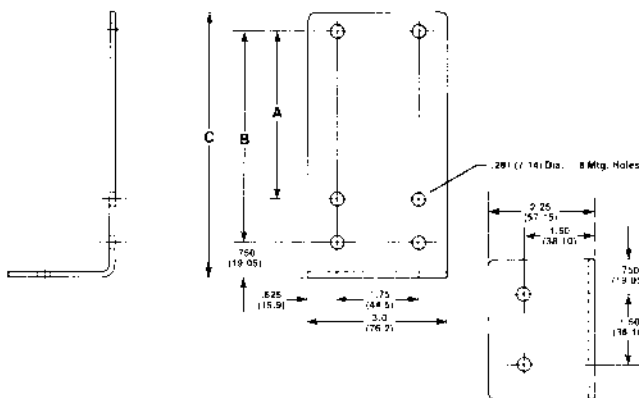
MSP Mounting Bar Kit No. 524-004-980 includes 2 mounting bars, 4 screws, washers and lockwashers.

Mounting Bars for MD, MSP, MJ and MX Divider Valves

For Divider Valve Model	Dimensions/inches (mm)				Wt./oz. (kg)	Order Part No.
	A	B	C	D		
MD	4 (101.6)	2-1/8 (53.98)	2 (50.8)	1/4-20	22 (0.62)	543-602-000
MSP	4 (101.6)	1-3/4 (44.5)	1 (25.4)	1/4-20	12 (0.34)	527-002-260
MJ	3 (76.2)	3/4 (19.05)	3/4 (19.05)	#10-24	8 (0.22)	543-604-000
MX	6 (152.4)	1-7/8 (47.6)	1-1/2 (38.1)	5/16-18	30 (0.56)	543-605-000

MOUNTING BRACKETS

Cold rolled steel brackets, 1/8" (3.175 mm) thick, are plated to resist corrosion. Holes in bracket are provided for mounting the bracket to the equipment and the divider valve to the bracket. Each bracket is shipped with the screws, lockwashers and nuts necessary to mount the divider valve to the bracket.



Top Mounting Brackets for MSP & MH Divider Valves

For Divider Valve Model	Dimensions/inches (mm)			Order Part No.
	A	B	C	
MSP & MH M-3 & 4	3-37/64 (90.9)	4-1/2 (114.3)	5-21/32 (143.7)	527-002-010
MSP & MH M-5 & 6	5-27/64 (137.7)	6-11/32 (161.1)	7-1/2 (190.5)	527-002-020
MSP & MH M-7 & 8	7-17/64 (184.5)	8-3/16 (208.0)	9-11/32 (237.3)	527-002-030

Side Mounting Brackets for MSP & MH Divider Valves

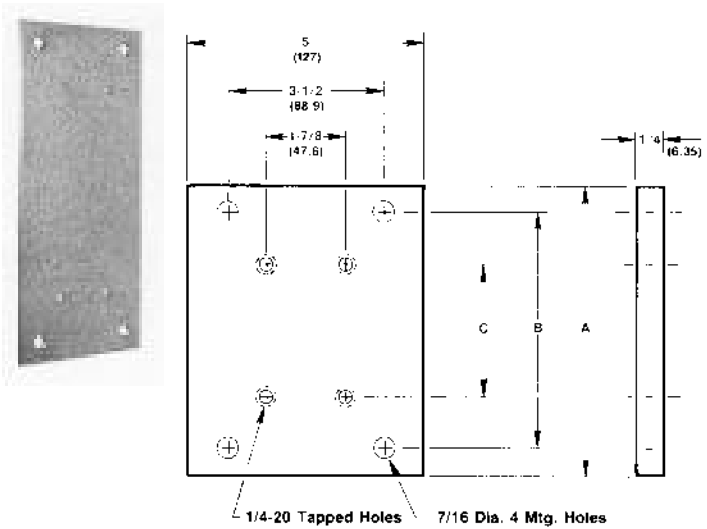
For Divider Valve Model	Dimensions/inches (mm)					Order Part No.
	A	B	C	D	E	
MSP & MH M-3 & 4	3-37/64 (90.9)	4-1/2 (114.3)	6-5/8 (168.3)	7-3/8 (187.3)	5-5/8 (142.9)	527-002-040
MSP & MH M-5 & 6	5-27/64 (137.7)	6-11/32 (161.1)	8-15/32 (215.1)	9-7/32 (234.2)	7-15/32 (189.7)	527-002-050
MSP & MH M-7 & 8	7-17/64 (184.5)	8-3/16 (208.0)	10-5/16 (262.0)	11-1/16 (281.0)	9-5/16 (236.5)	527-002-060

MOUNTING PLATES

Cold finished steel plates are 1/4" (6.35mm) thick and have holes provided for mounting the divider valve to the plate and the plate to the equipment.

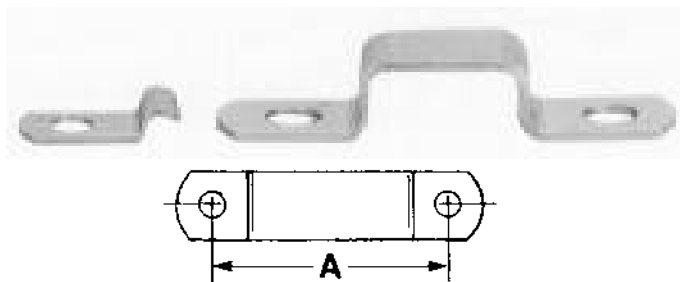
Mounting Plates for MX Divider Valves

For Divider Valve Model	Dimensions/inches (mm)			Wt./oz. (kg)	Order Part No.
	A	B	C		
MX-3	9-5/8 (244.5)	8-1/8 (206)	5-1/16 (129)	44 (1.24)	500-458-030
MX-4	10-3/4 (273)	9-1/4 (235)	6-3/16 (157)	48 (1.36)	500-458-040
MX-5	11-7/8 (302)	10-3/8 (263.5)	7-5/16 (186)	52 (1.47)	500-458-050
MX-6	13 (330)	11-1/2 (292)	8-7/16 (214)	56 (1.58)	500-458-060
MX-7	14-1/8 (358.8)	12-5/8 (321)	9-9/16 (243)	60 (1.70)	500-458-070
MX-8	15-1/4 (387)	13-3/4 (349)	10-11/16 (271)	64 (1.81)	500-458-080
MX-9	16-3/8 (416)	14-7/8 (378)	11-13/16 (300)	68 (1.92)	500-458-090



Clips for 3/16", 1/4 and 3/8" (4.76, 6.35 & 9.525 mm) OD tube.

All clips are plated and provided with 17/64" (6.75 mm) mounting holes.



Also available:
Item

Order Part No.

- Self-locking clip for 1/4" (6.35 mm) OD tube. With 9/32" (7.14 mm) mounting hole 500-981-120
- Self-tapping screws
 - 10-24 x 1/2 415-150-040
 - 1/4-20 x 1/2 415-210-020
 - 1/4-20 x 5/8 415-210-030
 - 1/4-20 x 3/4 415-210-040
 - 1/4-20 x 2 510-226-000

Tube Clips/in (mm)

No. of tubes held	3/16 (4.76) OD Tube		1/4 (6.35) OD Tube		3/8 (9.52) OD Tube	
	Dim. A	Order Part No.	Dim. A	Order Part No.	Dim. A	Order Part No.
1	—	500-971-000	—	500-981-000	—	500-991-000
2	1.37 (34.8)	500-972-000	1.43 (36.3)	500-982-000	1.62 (41.3)	500-992-000
3	1.50 (38.1)	500-973-000	1.62 (41.1)	500-983-000	2.00 (50.8)	500-993-000
4	1.68 (42.7)	500-974-000	1.87 (47.5)	500-984-000	2.37 (60.2)	500-994-000
5	1.75 (44.5)	500-975-000	2.12 (53.8)	500-985-000	—	—
6	2.00 (50.8)	500-976-000	2.37 (60.2)	500-986-000	—	—

Look to LUBRIQUIP, INC., for all of your Centralized Lubrication System needs.

Products include:

- DIVIDER VALVES:** for oil and grease...to 7500 PSI...1 to 20 points from a single valve assembly...up to 400 points from a Master/Secondaries circuit...or systems that handle an entire plant.
- PUMPS:** fixed and variable displacement...manual and air, hydraulic, electric motor or mechanically driven.
- TIMERS/AUTOMATIC CONTROLS:** from simple on/off to complete flow and pressure monitoring, either time-or machine-actuated.
- ACCESSORY VALVES:** balancing, check and flow.
- INDICATORS:** performance and broken line.
- ACCESSORIES:** fittings, brackets, clamps, filters and strainers.



® Registered trademarks of LUBRIQUIP, INC., A Unit of IDEX Corporation. Printed in U.S.A.

