

Pressure Gauges to 10,000 psig...

These gauges from Lubriquip, Inc. are simple, dependable, economical and proven over a wide variety of applications to be accurate to $\pm 2\%$ over the dial range.

They are recommended for use with grease, oil, air, water or any other medium that will not deteriorate brass.

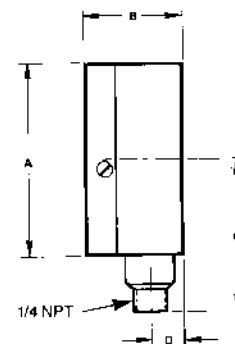
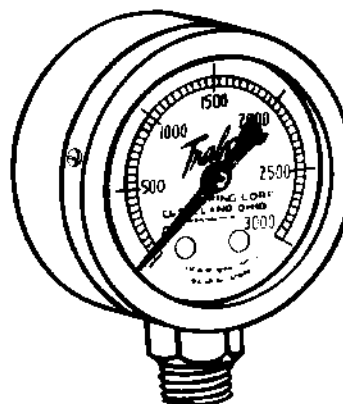
All are furnished with glass crystal, steel case and ring, and unless otherwise noted, a brass outlet connection.

NOTE: When any gauge furnished with a threaded snubber for the outlet connection is to be used with grease, the snubber should be removed.

Pressure Gauges (bottom-mounted)

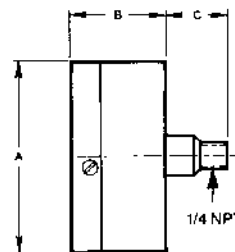
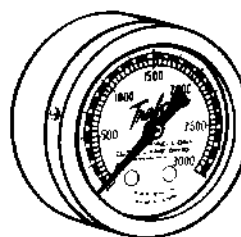
Dial Range, psig	Dial Dia. in. (mm)	Dimensions, in. (mm)				Order Part No.
		A	B	C	D	
0-60	2 (50.8)	2-1/16 (52.4)	1-1/16 (26.9)	1-5/8 (41.3)	3/8 (9.5)	540-303-000
0-150	2-1/2 (63.5)	2-23/32 (69)	1-9/32 (32.5)	2-7/32 (56.4)	27/64 (10.7)	540-687-000
0-600	2-1/2 (63.5)	2-23/32 (69)	1-9/32 (32.5)	2-7/32 (56.4)	27/64 (10.7)	540-328-000
0-1,000	2 (50.8)	2-1/16 (52.4)	1-1/16 (26.9)	1-5/8 (41.3)	3/8 (9.5)	534-335-000
0-1,500	2-1/2 (63.5)	2-23/32 (69)	1-9/32 (32.5)	2-7/32 (56.4)	27/64 (10.7)	493-020-025
0-3,000	2 (50.8)	2-1/16 (52.4)	1-1/16 (26.9)	1-5/8 (41.3)	3/8 (9.5)	514-215-001
0-3,000 (A)	2-1/2 (63.5)	2-23/32 (69)	1-9/32 (32.5)	2-7/32 (56.4)	27/64 (10.7)	542-870-000
0-3000 (C)	2-1/2 (63.5)	2-23/32 (69)	1-9/32 (32.5)	2-7/32 (56.4)	27/64 (10.7)	526-200-300
0-5,000	2 (50.8)	2-1/16 (52.4)	1-1/16 (26.9)	1-5/8 (41.3)	3/8 (9.5)	503-557-001
0-10,000 (A)	2-1/2 (63.5)	2-23/32 (94.5)	1-9/16 (39.6)	3-7/16 (87.3)	35-64 (13.9)	526-200-310

Fred C. Gilbert Co.
106 Norris Road
Bakersfield, Ca. 93308
661-399-9569
fax 661-393-9654



Pressure Gauges (back-mounted)

Dial Range, psig	Dial Dia. in. (mm)	Dimensions, in. (mm)			Order Part No.
		A	B	C	
0-1,000	2 (50.8)	2-3/16 (55.6)	1-3/16 (30.2)	7/8 (22.4)	493-020-198
0-1,500	2 (50.8)	2-3/16 (55.6)	1-3/16 (30.2)	7/8 (22.4)	493-020-227
0-3,000 (B,C)	2-1/2 (63.5)	2-23/32 (69)	1-1/4 (31.8)	7/8 (22.4)	510-770-240
0-3,000	2-1/2 (63.5)	2-23/32 (69)	1-9/32 (32.5)	57/64 (22.6)	543-362-000
0-5,000	2 (50.8)	2-3/16 (55.6)	1-15/64 (31.4)	57/64 (22.6)	511-200-300
0-10,000	2-1/2 (63.5)	2-7/8 (73.2)	1-5/32 (29.5)	1 (25.4)	493-020-206
0-10,000 (A,C)	2-1/2 (63.5)	2-7/8 (73.2)	1-5/32 (29.5)	1 (25.4)	493-020-207



Registered trademarks of LUBRIQUIP, INC.,
A Unit of IDEX Corporation. Printed in U.S.A.
© LUBRIQUIP, INC., A Unit of IDEX Corporation 1972
(Revised March 1992). All Rights Reserved

A = Steel outlet connection
B = Chromed brass connection
C = Liquid Filled