

Fred C. Gilbert Co.
106 Norris Road
Bakersfield, Ca. 93308
661-399-9569
fax 661-393-9654

Bulletin 15201

DESCRIPTION

The Lubriquip High Pressure Line Filter is designed for hydraulic or oil lubrication systems with pressures up to 7,500 PSI. It removes particles from systems larger than 10 or 25 microns and reduces shutdown of a system that may be caused by inadequate filtering.

FEATURES/BENEFITS

- Replaceable bronze filter element.
- Simple and compact in design.
- Easy to install on any new or existing system.
- Element can be changed without disturbing piping or tubing.
- Filter may be permanently mounted.

OPERATION

Install the filter in the output line of the pump to provide filtration of the oil entering the system. The oil passes through the filter assembly from the inlet port to the outlet port. Recommended mounting position is with the inlet on the bottom. See outline and mounting dimensions.

This filter is designed to allow contaminated filter elements to be changed without removing existing piping or tubing. Simply remove the end plug, spring, and spring retainer (items 6, 5 and 4) to access the filter element. Refer to the drawing on back page.

NOTE: Do not attempt to replace filter element with pressure in system.

CAUTION: When replacing filter element make sure that the large tapered end fits toward the outlet end and into the filter body securely. The spring retainer, item 3, should fit into the small end of the element.



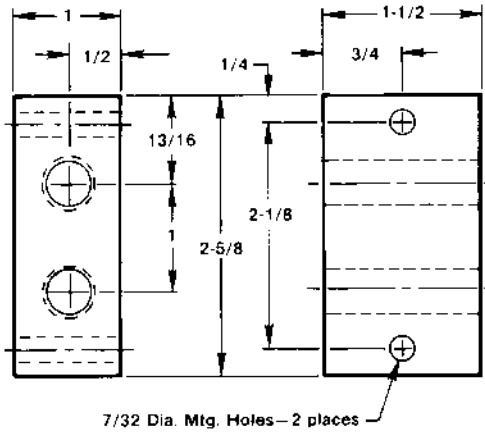
SPECIFICATIONS

Material (Body)	Steel
Filter Rating (Nominal Filtration)	10 or 25 microns
Maximum Pressure	7,500 psi (5,273 kg/cm ²)
Net Weight	Approx. 3 lbs. (1.36 kg)

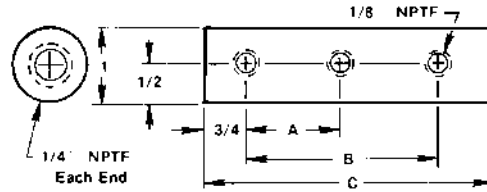
ORDERING INFORMATION

Filter Assembly with 10 micron Element	527-100-230
Filter Assembly with 25 micron Element	527-100-240

180° Straight Anchor Fitting-2 Lines (zinc-plated steel)
 1/4 NPSF, Part No. 542-171-000

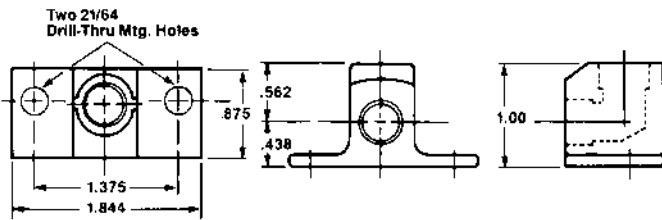


Manifold (zinc-plated steel)

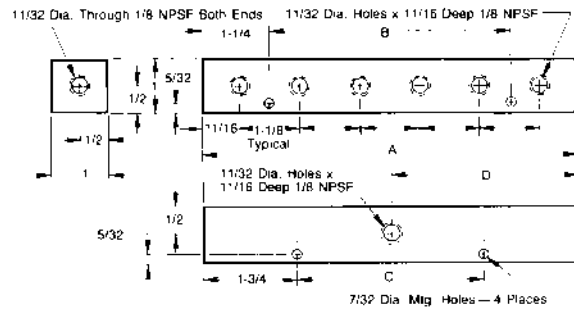


NO. OF OUTLETS	DISTANCE BETWEEN OUTLETS			PART NUMBER
	A	B	C	
2	—	1-1/2	3	482-000-020
5	1-1/2	6	7-1/2	482-000-050
6	1-1/2	7-1/2	9	482-000-060

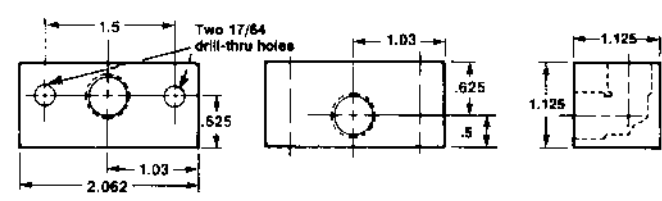
90° Drop Elbow (brass)
 1/8 NPSF, Part No. 509-150-000



Manifold (aluminum), 1/8 NPSF

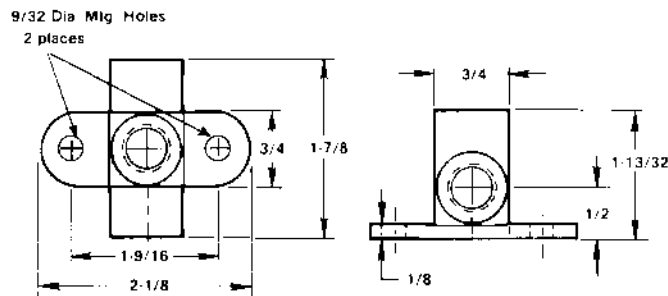


Elbow Anchor (zinc-plated steel)
 1/4 NPT, Part No. 509-155-001



NO. OF OUTLETS	DIMENSIONS				PART NUMBER
	A	B	C	D	
7	8-1/8	4-1/2	3-1/2	3-1/2	510-764-000
9	10-3/8	6-3/4	5-3/4	4-5/8	510-764-190

Wing Tee (zinc-plated steel)
 1/4 NPTF, Part No. 509-164-001



LUBRIQUIP
 Centralized Lubrication Systems

® Registered trademarks of LUBRIQUIP, INC., A Unit of IDEX Corporation. Printed in U.S.A.