

Fred C. Gilbert Co.  
106 Norris Road  
Bakersfield, Ca. 93308  
661-399-9569  
fax 661-393-9654

Bulletin 15206

### DESCRIPTION

Trabon® Single and Dual Cartridge Type Filter units are available with nominal 10 or 25 micron filtration for oil lubrication systems with up to 1-1/2 gpm flow and operating pressures up to 1,200 psi non-shock. Both single and dual filter units are available with either standard or extra-long cartridges.

The Dual Filter unit provides a face-mounted flow selector lever that directs oil to be filtered through one or the other cartridge. This provides a clean filter at the flip of the lever.

### FEATURES

- Filter elements are easily replaceable.
- Dual Filter unit's design allows either filter to be replaced while oil flow is channeled through the other filter. Eliminates downtime for filter replacement.
- Bypass relief valve is standard with both units. Reduces risk of system damage in the event the filter element becomes fully contaminated.
- Optional extra-long filter cartridge provides more filtering capability. Extends intervals between filter replacement.
- Optional gauges and differential pressure indicators provide filter status monitoring capability.

### SPECIFICATIONS

Material ..... Cast aluminum and steel  
 Rated pressure  
 (non shock) ..... 1,200 psi (8274 kPa)  
 Bypass relief valve ..... Factory set to open  
 at 50 psi (345 kPa)  
 Filter ratings ..... 10 and 25 microns nominal  
 Lubricant ..... Oil only, up to 5,000 SSU  
 Weight (approx.)  
 Single unit, standard element ..... 5 lbs. (2.26 kg)  
                   extra-long element ..... 9 lbs. (4.08 kg)  
 Dual unit, standard elements ..... 12 lbs. (5.44 kg)  
                   extra-long element ..... 19 lbs. (8.61 kg)



### OPERATION

Both the single and dual units operate in the same manner. Oil from the inlet is directed to the outside of the filter element, through the element, and then to the outlet port. The bypass relief valve opens when a pressure differential of 50 psi exists between the inlet and outlet sides of the filter element. This differential indicates that the filter is completely contaminated. With the bypass open, oil flows directly from the inlet to the outlet, bypassing the filter element.

It is recommended that optional gauges be installed in both gauge ports to allow quick determination of the pressure differential. When these gauges indicate a pressure differential of 40 psi, the filter element should be changed immediately.

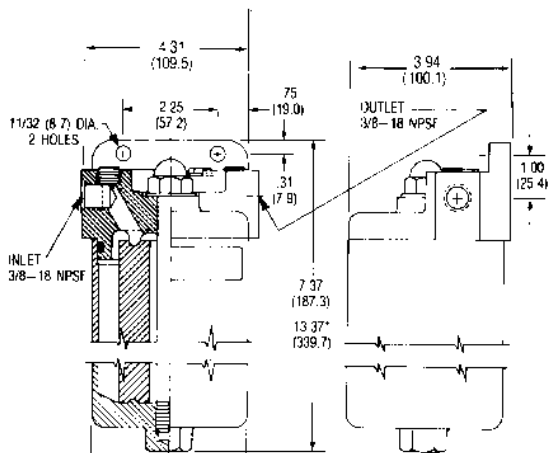
When complete contamination of the filter element occurs in a single cartridge unit, **the lubricating system must be shut down and all pressure on both sides of the filter element must be totally relieved before changing the element.**

In the dual cartridge unit, when complete contamination of a filter element occurs, the flow section lever should be moved to direct flow through the second filter. Then the contaminated element can be replaced without shutting down the lubrication system.

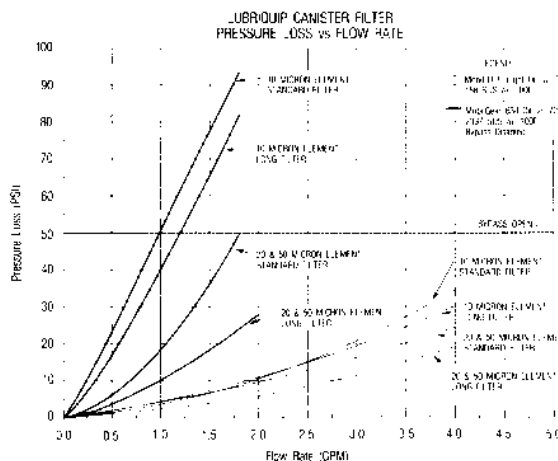
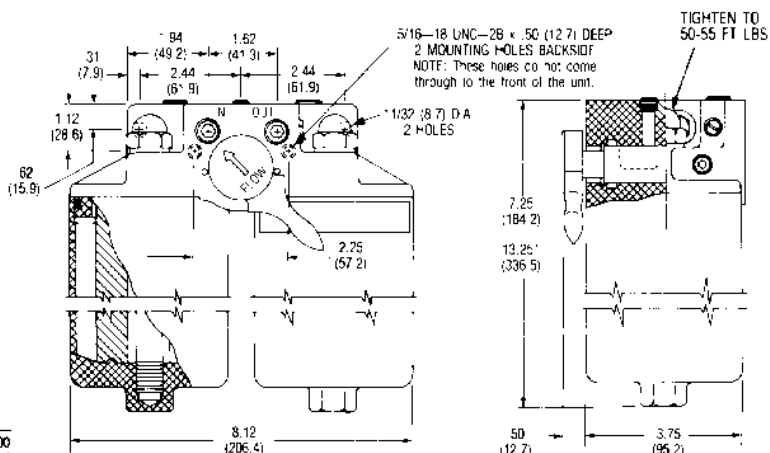
15206

**DIMENSIONS**

Inches (mm)



\*NOTE: Dimensions for extra-long cartridge unit only.



**MOUNTING INSTRUCTIONS**

- (1) Be sure to mount the unit securely to a flat surface, and in an upright position. Two sets of mounting holes are provided, as shown in the dimensional drawings.
- (2) Be certain to allow adequate room below the unit for removal of the filter element for inspection or replacement.
- (3) Seal all pipe connections. **DO NOT USE TEFLON TYPE TAPE.**

Optional mounting brackets are available. The standard bracket can be used with both single and dual filter units that have standard length filter elements. The long bracket can be used with both single and dual filter units that have extra-long filter elements. (Mounting hardware is not included.)

**HOW TO ORDER**

Gauges and mounting brackets must be ordered separately. Order a complete filter unit using the following Part Numbers.

<b>Single Filter Unit with standard length:</b>	
10-micron element	183-000-141
25-micron element	183-000-151
<b>Single Filter Unit with extra-length:</b>	
10-micron element	183-000-201
25-micron element	183-000-211

<b>Dual Filter Unit with standard length:</b>	
10-micron element	183-000-001
25-micron element	183-000-011
<b>Dual Filter Unit with extra-length</b>	
10-micron element	183-000-071
25-micron element	183-000-081

**Accessories:**

Gauge, 0 — 1,500 psi: (See Bulletin No. 15326)	493-020-025
<b>Differential Pressure Indicators:</b>	
For single filter units	540-833-490
For dual filter units	540-833-500

**Spare Parts:**

<b>Seal Kits for dual and single filter units:</b>	
For current style (O-Ring Seal)	560-000-701
For obsolete units (Quad Ring Seal)	560-000-700
<b>Replacement elements for all current and obsolete filter units:</b>	
10-micron standard	540-271-001
10-micron extra-long	540-274-001
25-micron standard	540-272-001
25-micron extra-long	540-275-001
50-micron standard	540-273-001
50-micron extra-long	540-276-001

