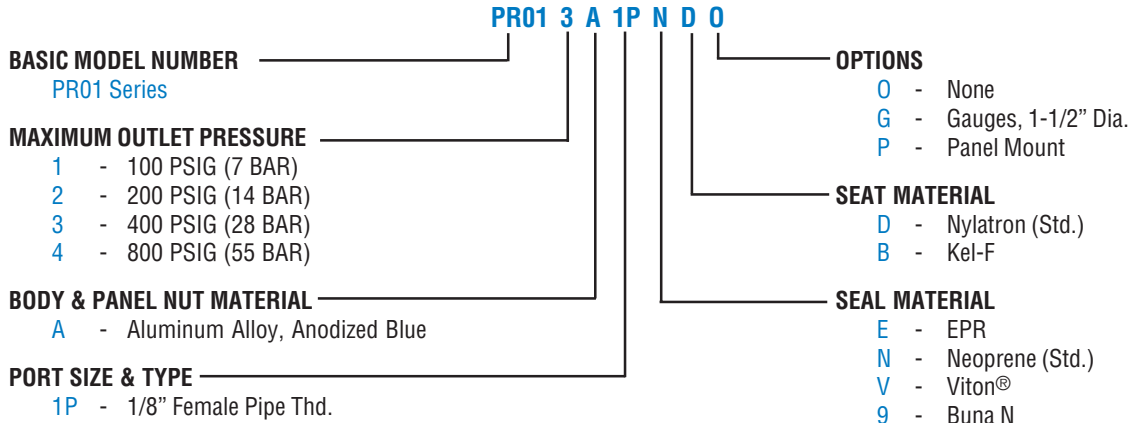




# PR01 SERIES

Inlet 0 to 3,000 PSIG & Outlet 10 to 720 PSIG

## How To Order



Model Number	Approx. Handle Turns Max. Outlet	Operating Press. Range (PSI)	Approx. Outlet Press. Increase per 100 PSI, Inlet Decrease PSI	Approx. Air Flow Vs. Outlet Press. (SCFM/PSI)*	Approx. Cv*
PR011	3-3/4	10 - 90	3.5	10 / 70	.007
PR012	4-1/2	20 - 180	3.5	18 / 140	.012
PR013	1-3/4	40 - 360	3.5	31 / 280	.021

Notes:

\* At maximum inlet and set at maximum rated outlet lock-up pressure.

40 micron absolute filtration of inlet fluid media recommended.

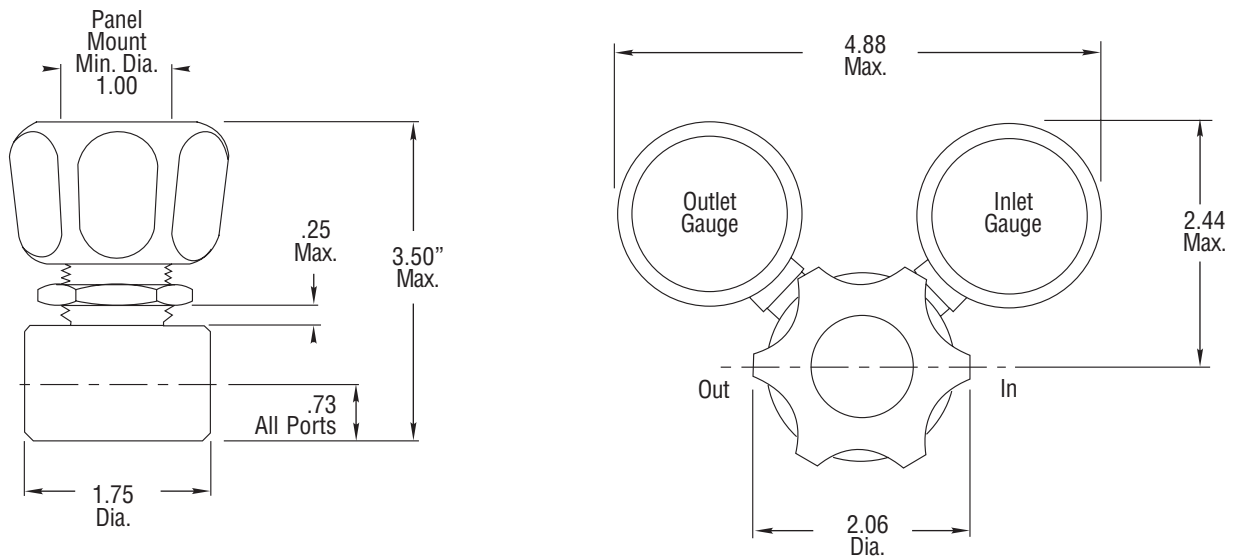
Relief valve downstream of outlet port should always be used.

Main seat is factory tested to be bubble tight for a period of one minute with full inlet pressure.

Please consult your Circle Seal Controls Distributor, Representative or the factory for information on special connections, operating pressures and temperature ranges.

Viton® is a registered trademark of DuPont Dow Elastomers.

## Dimensions



 **CIRCLE SEAL CONTROLS, INC.**  
A division of CIRCOR International, Inc.

Certified to ISO 9001